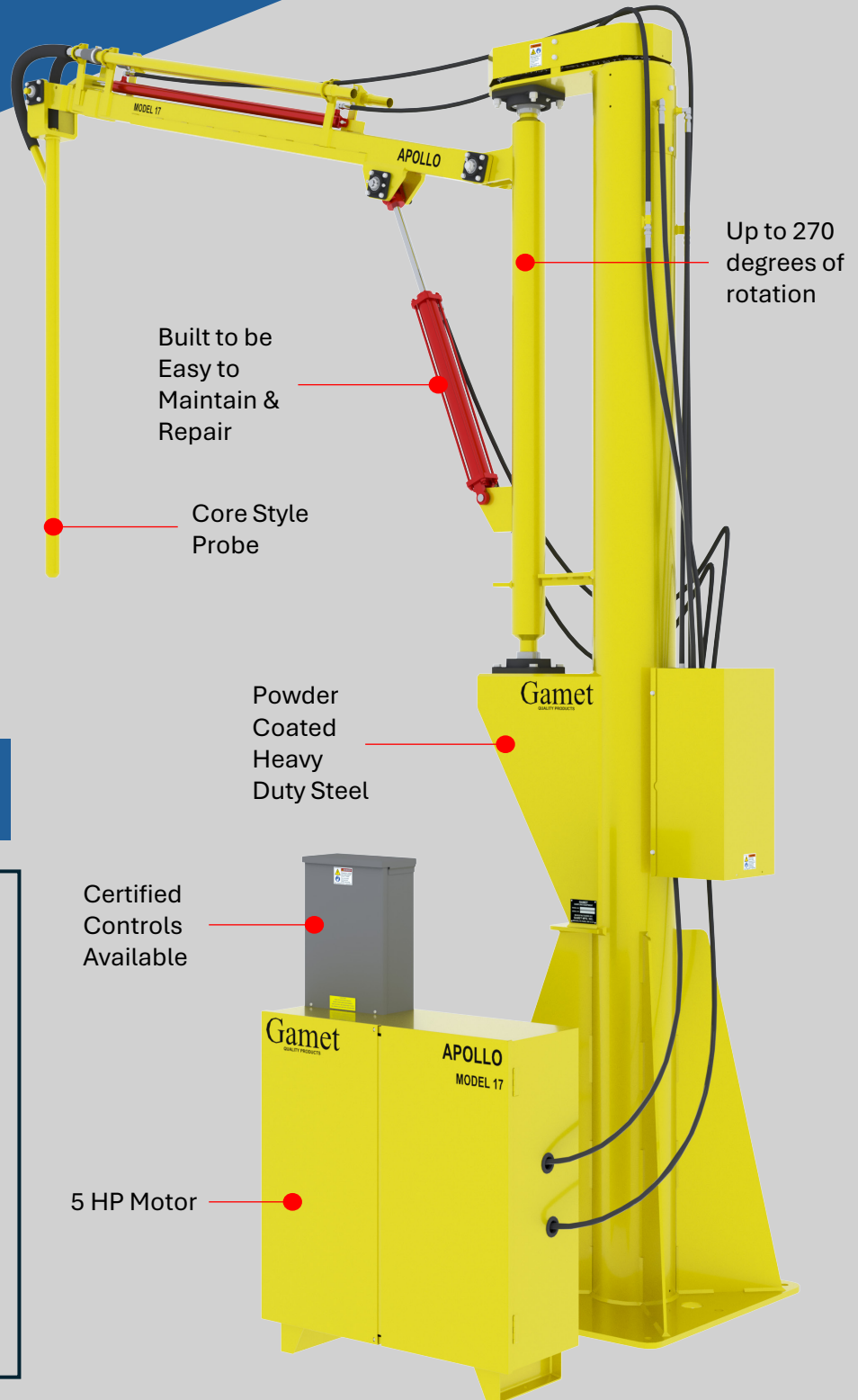


# Apollo<sup>TM</sup>

## Truck Probe Sampling System

# Model 17

# Gamet<sup>®</sup>



Joystick  
Controls



### Multiple Vacuum Options

- Designed for Medium to High Volume Applications
- Supplied With all Hydraulic, Vacuum, & Electric Components
- Line of Accessory Items Available to Create a Comprehensive System

Designed to Provide Years of Reliability

**Gamet Manufacturing Inc.**

Email: [info@gametmfg.com](mailto:info@gametmfg.com)

Toll Free: 888-647-5475

[www.gametmfg.com](http://www.gametmfg.com)

**Mailing Address:**

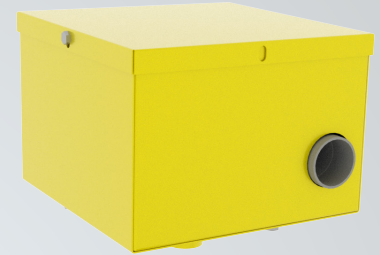
7400 Boone Ave N

Brooklyn Park, MN 55428

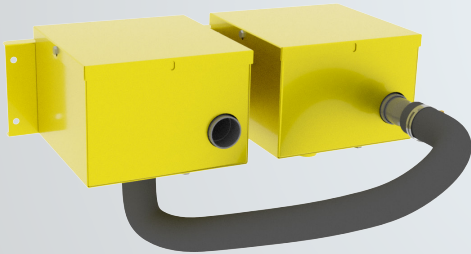
## Vacuum System Options

### Standard Vacuum System

Supplied with a separate vacuum & clean air supply motor. Suitable for conveying product up to 120'.



### Dual Vacuum System



Supplied with (2) separate vacuums & (1) clean air supply motor. Suitable for conveying product up to 250'.

### Positive Displacement Pump System

Supplied with a separate vacuum pump & clean air supply motor. Suitable for conveying product in excess of 250'.



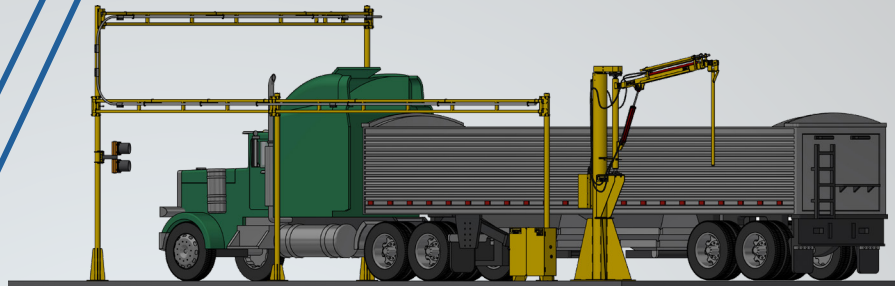
## System Accessories

### Traffic Lights

- Modular Design for many possible configurations.
- Controls can be incorporated into the probe controller.



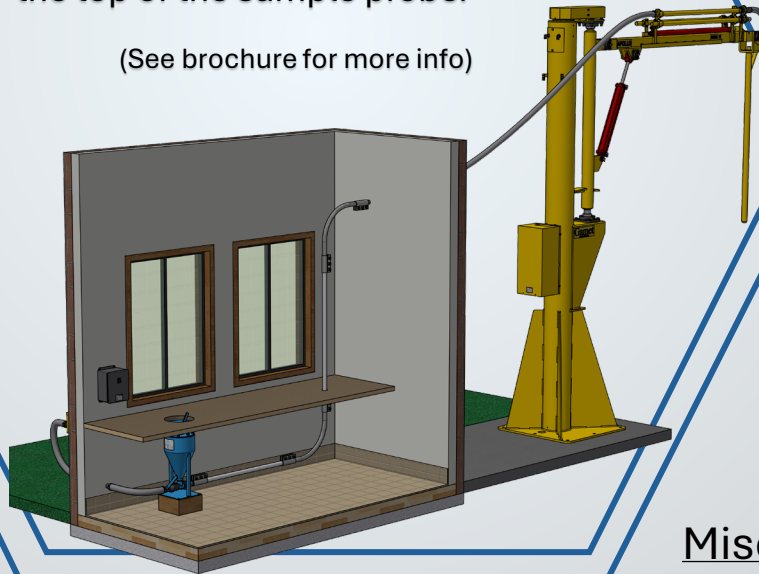
### Bridge & Support Structure



### Grain Return System

This complete excess sample return system allows elevator personal to transport excess grain samples back to the top of the sample probe.

(See brochure for more info)



- Modular design to fit site needs
- Powder coated steel construction  
(See brochure for more info)

### Camera System

For applications where a truck probe operator doesn't have a clear vision into the probing area.

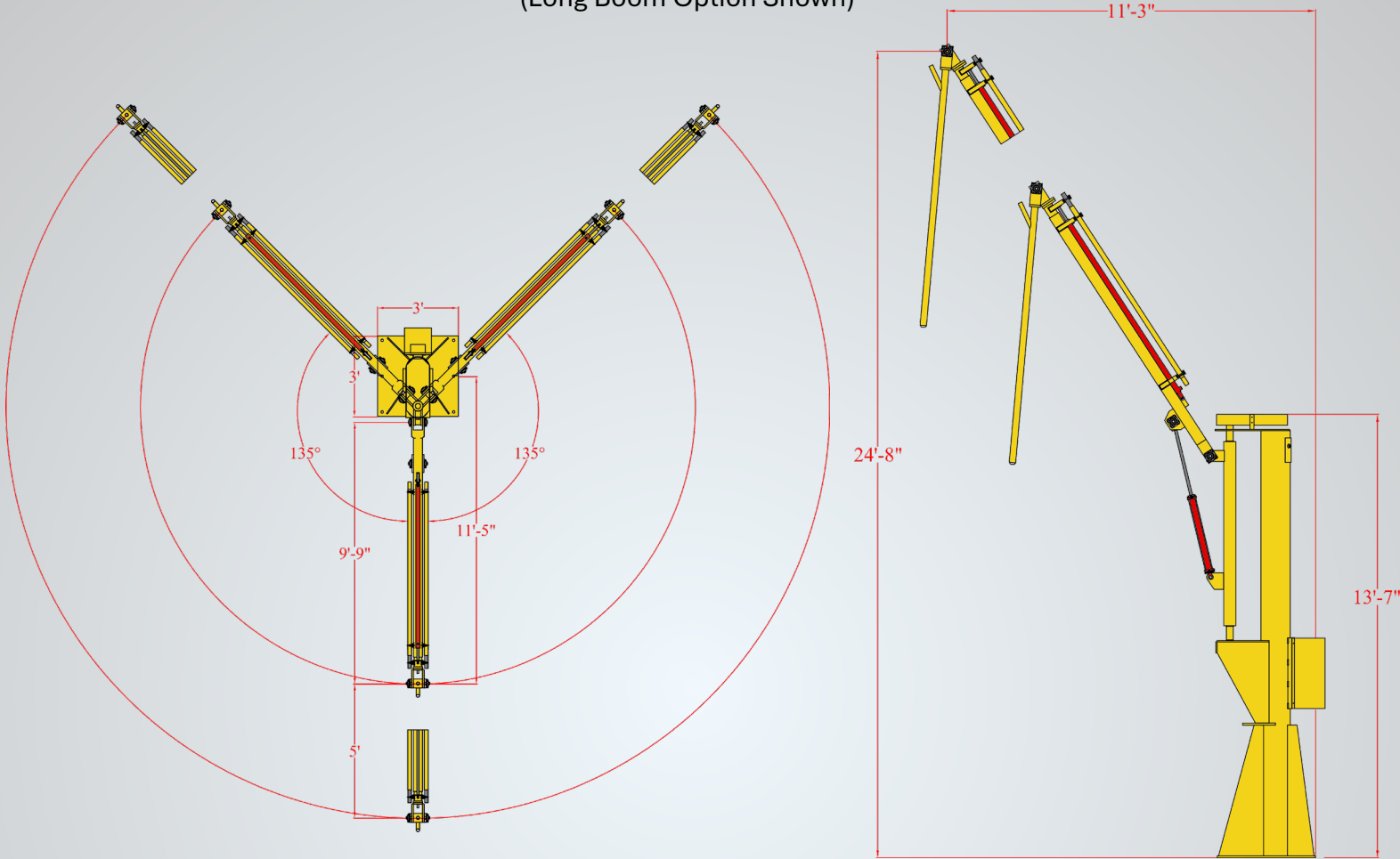
(Camera, Monitor, & other components provided. See brochure for more info)



### Miscellaneous

- A signal alarm can be attached to the truck probe, controlled by the probe controller.
- Cyclone Style Collection System can be used for difficult to convey commodities and noise reduction in the office/lab.

## Truck Probe Dimensions (Long Boom Option Shown)



## System Specifications

Base	Height	Rotation	Reach	Probe Length	Hydraulic Pump	Voltage
36" x 36"	13' 7"	180° or 270°	8' 3" - 12' 3" or 9' 9" - 14' 9"	7', 8' or 9'	5HP, 4 GPM, & 850 PSI	1 Phase or 3 Phase

Our Engineers and Sales Team are available to review your specific needs and help you select the proper size equipment and accessories for your application.

Proudly Made in the USA 